

Welcome To

BLOOM CIC



PATHWAYS TO INDEPENDENCE,
ROOTED IN COMMUNITY

Table of Contents

BLOOM
CIC

02	Welcome
03	Our CIC Structure
04	Our Mission
05	Who we will Support
06	About us
07	Our Offer: Education
08	Our Offer: Social Care
09	Team Ethos
10	Facilities

WELCOME

Welcome to Bloom CIC, a Blackpool-based Community Interest Company dedicated to supporting young adults with special educational needs and disabilities (SEND).

We are in the process of establishing our new day service that will offer personalised education and social care programmes for ages 16 and over.

Our vision is to create and grow a nurturing, empowering environment where young people develop life and work skills, build confidence and become active members of our local community.



OUR CIC STRUCTURE

Bloom will be incorporated as a Community Interest Company (CIC), a legal structure that differs from a typical Limited Company.

Whereas Limited Companies are operated primarily for the benefit of shareholders, a CIC exists to deliver social value. For Bloom, this means placing our local community in Blackpool and Fylde at the heart of everything we do, with profits used to benefit that community.

This community-based approach, supported by the CIC asset-lock, demonstrates the founders' commitment to social impact and guarantees that surpluses cannot be extracted by private shareholders. Under CIC regulations, at least 65% of profits must be reinvested in service improvements, and Bloom is committed to going further wherever possible.

This model provides a secure foundation for sustainable growth while giving funders confidence in our long-term viability.



OUR MISSION

Our mission is to provide tailored, person-centred support that empowers young people with SEND to build on their strengths and move toward the level of independence that reflects their individual needs. We focus on nurturing each person's capabilities through personalised care and engaging, skill-building activities.

- *Empowerment through inclusion – we give learners the tools to express themselves, make choices and build positive relationships.*
- *Community links – we connect learners with organisations that value their talents and promote meaningful, long-term inclusion. Our goal is always to maximise independence while recognising some support may be required throughout life.*
- *Positive outcomes – we ensure support focuses on achievable goals and celebrates every success.*

With a combined 30+ years' experience in education, care and support, our leadership team is committed to delivering enriching, structured programmes that promote life and work skills in a fun, supportive environment. We model respectful, appropriate interactions and create a culture where each young person feels valued, safe and ready to thrive



WHO WE WILL SUPPORT

Bloom will support young adults aged 16 and over with a variety of learning disabilities and complex needs in Blackpool and the Fylde area.

Our programmes will be designed in consultation with families, carers and local authorities to ensure every learner benefits from the right mix of education, social care and community engagement when we open our doors.



ABOUT US

OUR FOUNDERS;

BLOOM
CIC

LAURA SPENCER

Operational Lead

Qualifications: PGCE (Post-Compulsory Education & Training), QTLS (Qualified Teacher Learning & Skills), Level 5 Positive Behaviour Support.

- Experience: 23+ years in post-16 teaching, 8 years in social care, and over a decade managing specialist SEND services.
- Role: Laura will steer staff training, curriculum design and daily operations, drawing on her track record of leading multidisciplinary teams and embedding positive behaviour support.

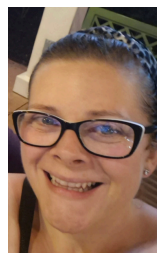


ROCHELLE MOLLOY

Pastoral Lead

Qualifications: NVQ Level 3 and OCR Level 3 in Health & Social Care, Level 3 Certificate in Safeguarding Adults.

- Experience: More than ten years' frontline and team-leading experience in SEND settings.
- Role: Rochelle will oversee day-to-day welfare and safeguarding, liaise with families, monitor incident reporting and support staff development in positive behaviour strategies, ensuring every learner feels safe, respected and valued.



STEPHEN MOLLOY

Finance & Administration Lead

Background: Entrepreneur who has owned and managed businesses in Blackpool since 2007, including his family firm trading since 1975 and property-investment ventures.

- Skills: Comprehensive expertise in cost control, project management, procurement and staff oversight; strong local networks with banks, accountants and insurers.
- Role: Stephen will manage finances, budgeting, payroll, invoicing and statutory filings (CIC34, VAT, PAYE, Companies House). He will also prepare grant applications, negotiate start-up financing and ensure external debt remains within conservative thresholds.





OUR OFFER; EDUCATION

We design person-centred education packages that focus on the value and longevity of learning. Our aim is to consolidate existing skills and scaffold new ones across purposeful, meaningful settings. All learning is tailored to individual outcomes, ensuring young people build skills they will carry into adulthood.

- Personalised programmes to maximise independence, consolidate existing skills and develop new ones.
- Total communication approach so learners can use their voice, build relationships and make choices confidently.
- Positive behaviour support embedded in all activities, recognising behaviour as communication and providing supportive strategies.
- Meaningful and fun learning with accreditation pursued where relevant to recognise each person's progress.
- Person-centred curriculum including cooking, community shopping and clear-down, creative arts (performance and dance), work placements both in-house and locally sourced, fitness activities using local amenities, a Student Union to foster rights and views, and dedicated 1:1 support to build relationships and self-worth.

Throughout our education provision, we enable young people to be the best they can be —maximising independence and equipping them with the skills and confidence to thrive into adulthood and beyond.



OUR OFFER; SOCIAL CARE

Our social care provision is driven by a passion to maintain, strengthen and celebrate the skills developed through education. We know some young adults will need ongoing support throughout their lives; our mission is to ensure that support is of the highest standard, with emphasis on tolerance, relationships and effective communication.

- Continuous skill-building: maintaining and reinforcing abilities learned in education through realworld activities.
- Meaningful community engagement: exploring local communities, working collaboratively with peers and having a voice in daily activities.
- Work and independence platform: offering work experiences, promoting independence and supporting access to local transport and community resources.
- Celebrating strengths: creating opportunities to demonstrate talents; we know young people can face barriers to employment, so we strive to provide activities that build self-worth and teamwork.

For some, social care is about providing lifelong support—for others it's a bridge to greater independence. Our approach ensures every young person feels valued and has opportunities to grow, contribute and enjoy a fulfilling life in their community.

TEAM ETHOS

Our vision is to foster local talent and develop a dedicated team who share the same exceptional standards as our service leads. By investing in staff skills and knowledge, we ensure every team member is equipped to deliver high quality, person centred support.

While we value individual skill sets and personalities, Bloom will create an environment where every staff member feels they belong and can contribute meaningfully. We encourage collaboration, openness and mutual respect, recognising that our strength lies in working together.

Ongoing training and professional development are at the heart of our ethos. This not only maintains high standards of care and education but also inspires staff to grow alongside the learners they support.

At Bloom, we believe that when staff feel valued, supported and inspired, they pass that positivity on to the young people we serve, creating a culture of inclusion, respect and growth.



FACILITIES

Bloom is currently securing premises and planning its' design for our new business . Our vision includes:

- Classrooms and creative spaces for personalised learning.
- Fully equipped kitchens for cookery skills development.
- Sensory and therapy areas to support wellbeing.
- Accessible outdoor areas for gardening, recreation and relaxation.
- Community access vehicles for work placements and trips.

Every space will be planned to be welcoming, safe and fully accessible to meet individual needs.

By finalising our premises and facilities, we will ensure our day service meets the highest standards for safety, accessibility and engagement.



BLOOM
CIC



LET'S GET IN TOUCH

WWW.BLOOMCIC.CO.UK

Laura Spencer; 07791688629
Stephen Molloy 07969032675
bloomblackpool@gmail.com